



L'ufficio tecnico comunale  
Arch. Diego Savarese

la Polizia Municipale  
Cap. Rocco Borrelli

Delegato alla protezione civile  
Pasquale Cacace

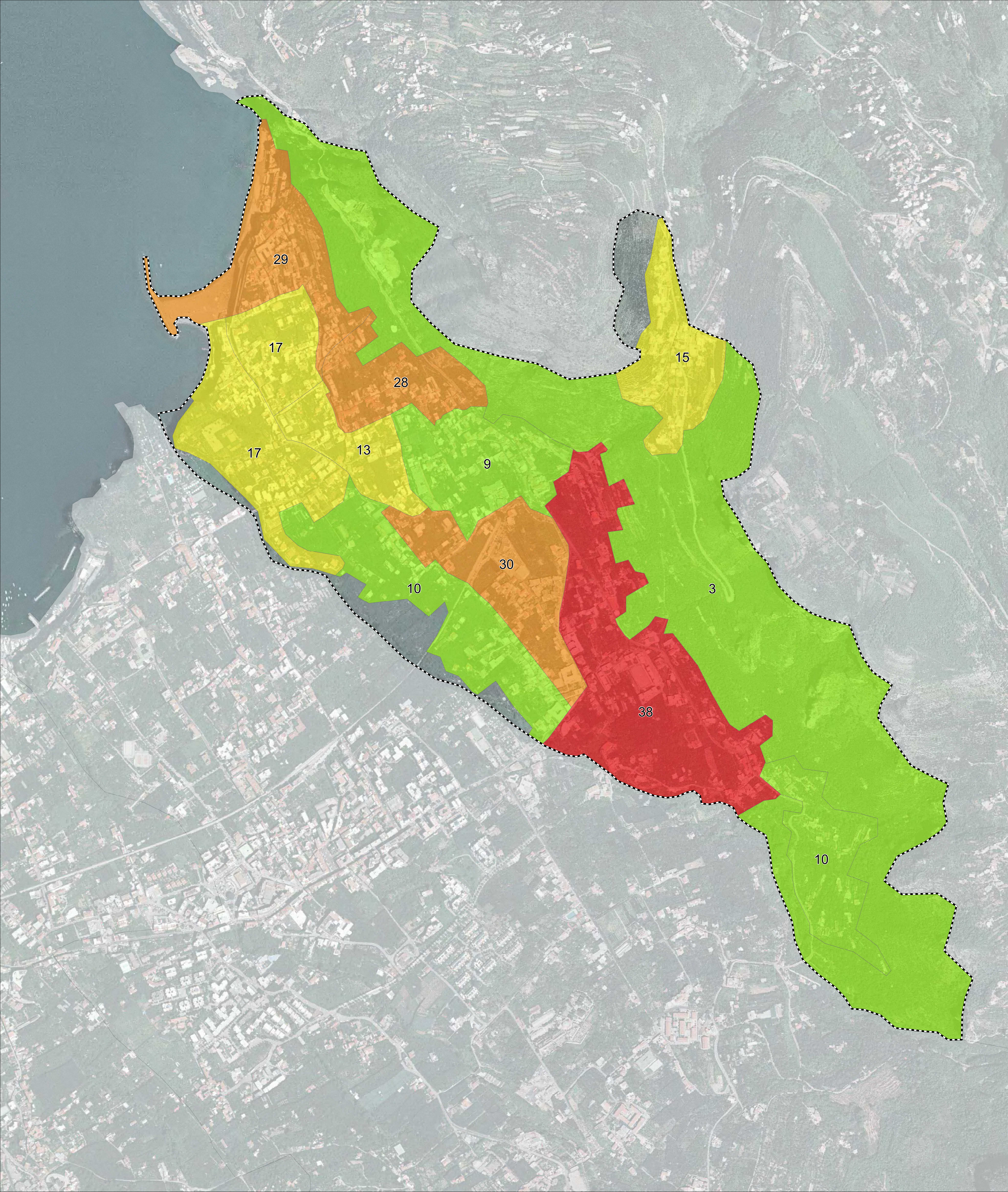
Il Sindaco  
Rag. Giuseppe Tizio

Tecnici esterni per le attività di supporto agli Uffici


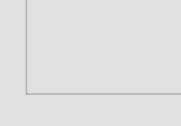
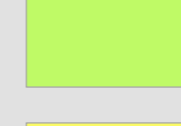
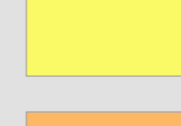
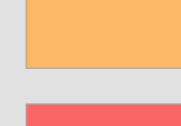
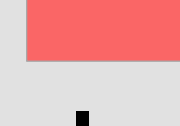


ELABORATO: Tav. 16 Rischio sismico: Carta dello scenario di impatto. Stima degli edifici inagibili e crollati a 475 anni

data: Marzo 2022



### Legenda

-  Limite comunale
-  0
-  1 - 10
-  11 - 20
-  21 - 30
-  31 - 38

I numeri indicano gli edifici crollati e danneggiati