



L'ufficio tecnico comunale
Arch. Diego Savarese

la Polizia Municipale
Cap. Rocco Borrelli

Delegato alla protezione civile
Pasquale Cacace

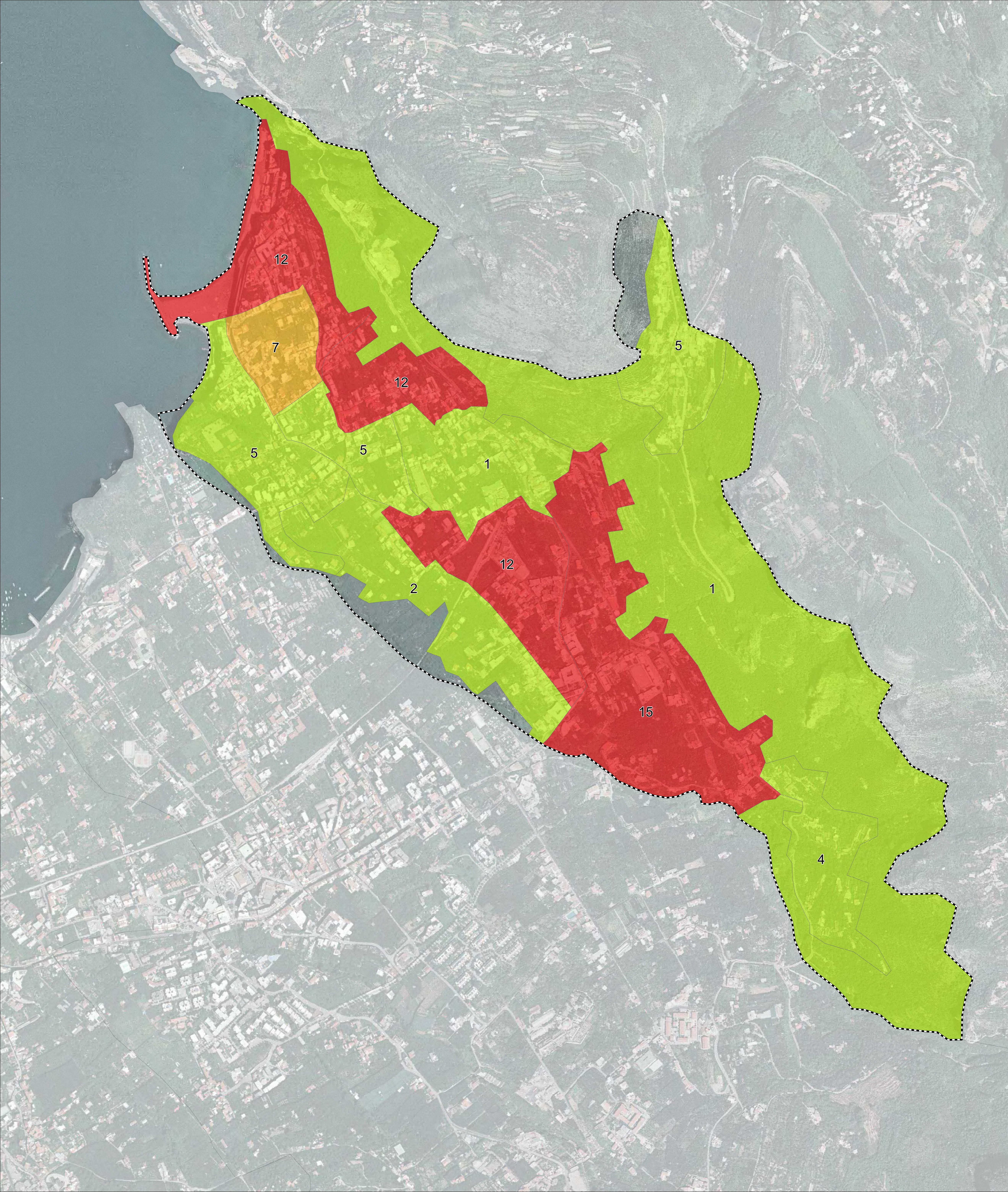
Il Sindaco
Rag. Giuseppe Tizio

Tecnici esterni per le attività di supporto agli Uffici


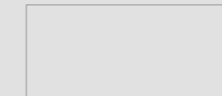


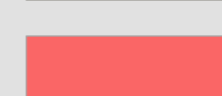


ELABORATO: Tav. 15 Rischio sismico: Carta dello scenario di impatto. Stima degli edifici inagibili e crollati a 101 anni

data: Marzo 2022



Legenda

-  Limite comunale
-  0
-  1 - 5
-  6 - 10
-  11 - 15

I numeri indicano gli edifici crollati e danneggiati